



Carima El-Behairy

Geboren am 21. Juni 1967 in Buffalo, NY. Studierte Architektur und Design. Mitgründerin der *P22 Typefoundry*.

P22 Art Deco Chic 2001 P22 Linotype
ABCDEFGHIJKLMNOPQRSTUVWXYZ
abcdefghijklmnopqrstuvwxyz 1234567890

P22 Art Deco Display 2001 P22 Linotype
ABCDEFGHIJKLMNOPQRSTUVWXYZ
abcdefghijklmnopqrstuvwxyz 1234567890

P22 Art Deco Extras 2007 P22 Linotype

mit James Grieshaber, RichardKegler

P22 Hieroglyphic Cartouche 1996 P22 Linotype

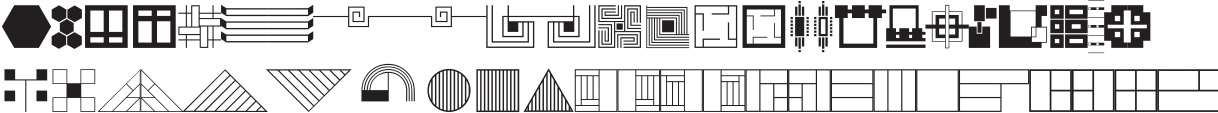
P22 Hieroglyphic Decorative 1996 P22 Linotype

P22 Hieroglyphic Phonetic 1996 P22 Linotype



mit Denis und Richard Kegler

P22 Eaglerock Extras 1999 P22 Linotype



mit Richard Kegler