



John E. Hanrahan

Geboren am 20. Februar 1859 in Baltimore. Dort ab 1872 tätig für die *Ryan Type Foundry*. Nebenbei Schriftkurse am *Maryland Institute School of Art and Design*.

Flag Border	ca.1897 Am. Type Founders
Flame Border	ca.1897 Am. Type Founders
Laurel Border	ca.1897 Am. Type Founders
Laurel Border Outline	ca.1897 Am. Type Founders
Laurel Ornaments	ca.1897 Am. Type Founders
Myrtle Border	ca.1897 Am. Type Founders
Primrose Border	ca.1897 Am. Type Founders
Regal Border	ca.1897 Am. Type Founders
Union Border	ca.1897 Am. Type Founders

Flag Borders

36 Point No. 1 for one color 24 inches \$1 65

36 Point No. 2 for two colors 24 inches \$3 30



24 Point No. 1 for one color 36 inches \$1 65

24 Point No. 2 for two colors 36 inches \$3 30



18 Point No. 1 for one color 36 inches \$1 30

18 Point No. 2 for two colors 36 inches \$2 60

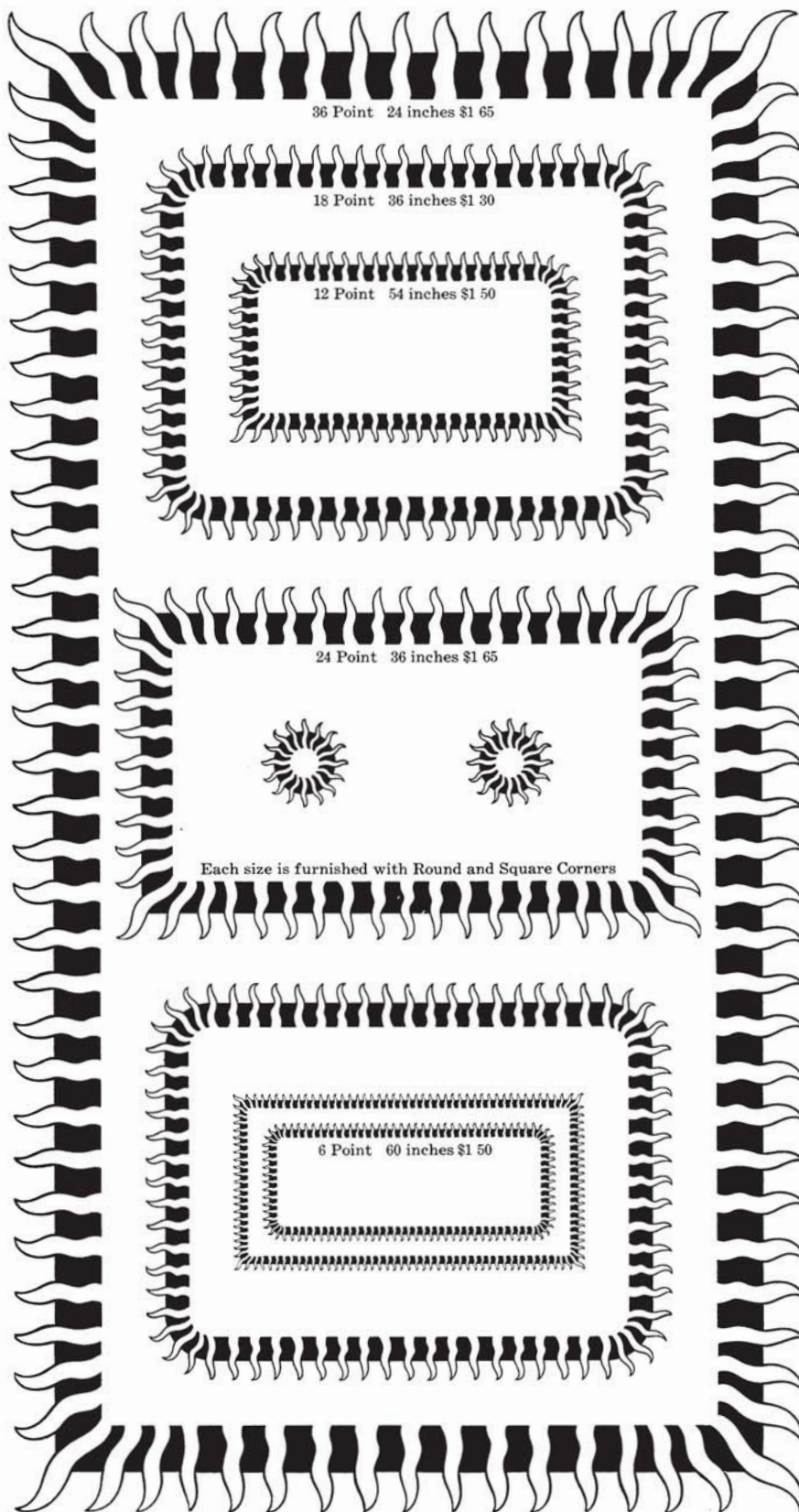


12 Point No. 1 for one color 54 inches \$1 50

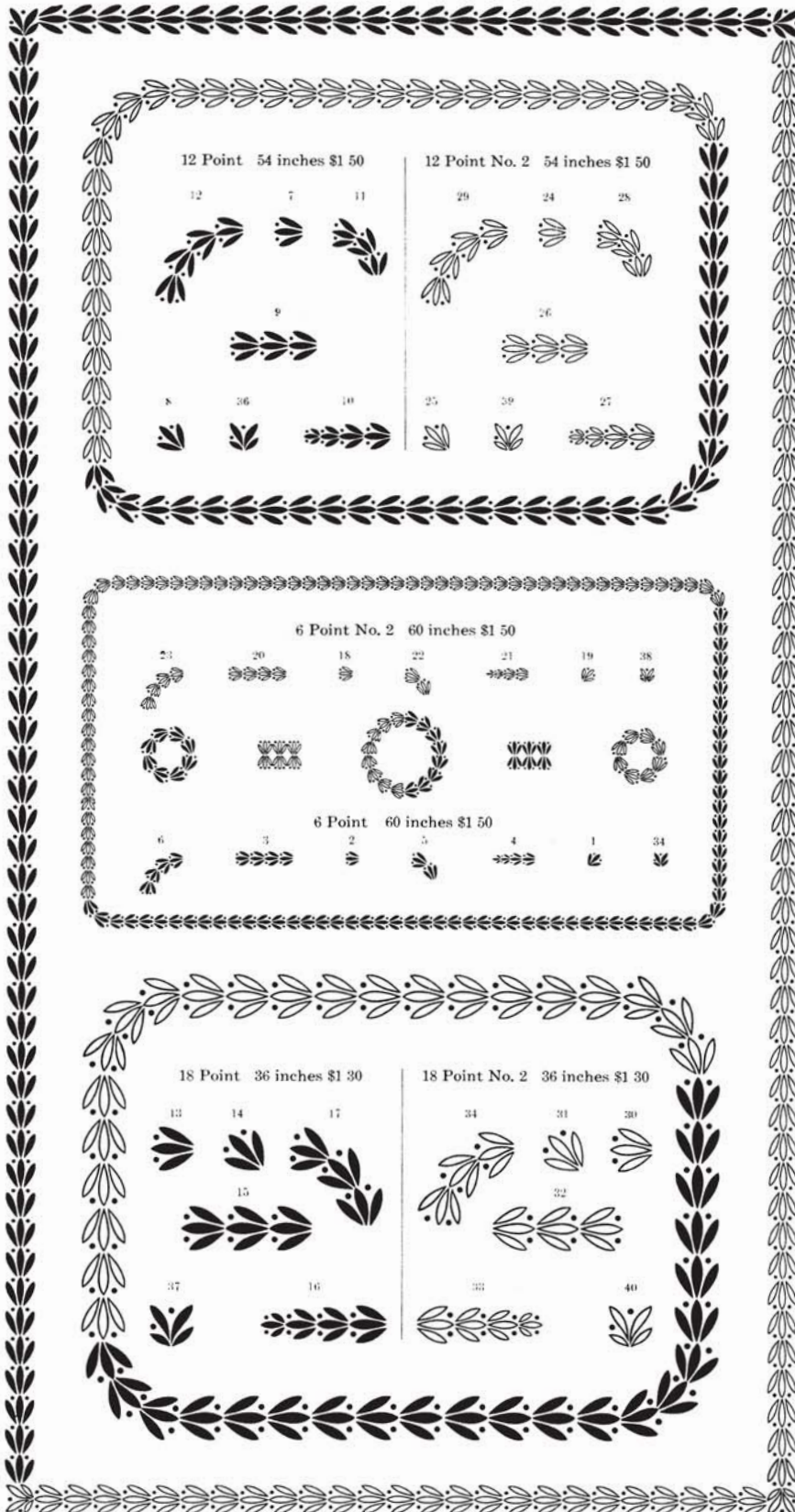
12 Point No. 2 for two colors 54 inches \$3 00



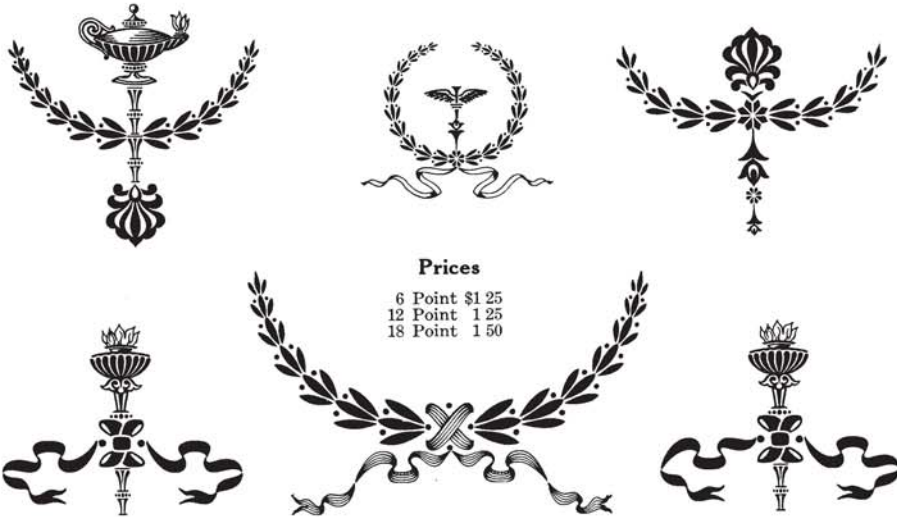
Flame Borders



Laurel Borders



Laurel Ornaments

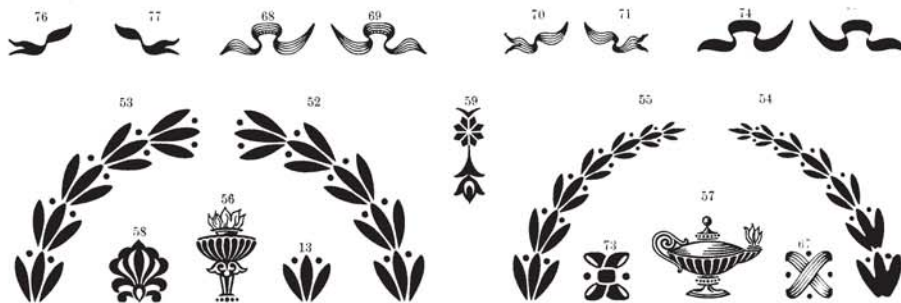


These Ornaments are cast in a cored type mould, with as little shoulder as possible on the inside of the wreaths, so that type lines may be set close up. A great variety of designs may be quickly and easily produced with these inexpensive Ornaments

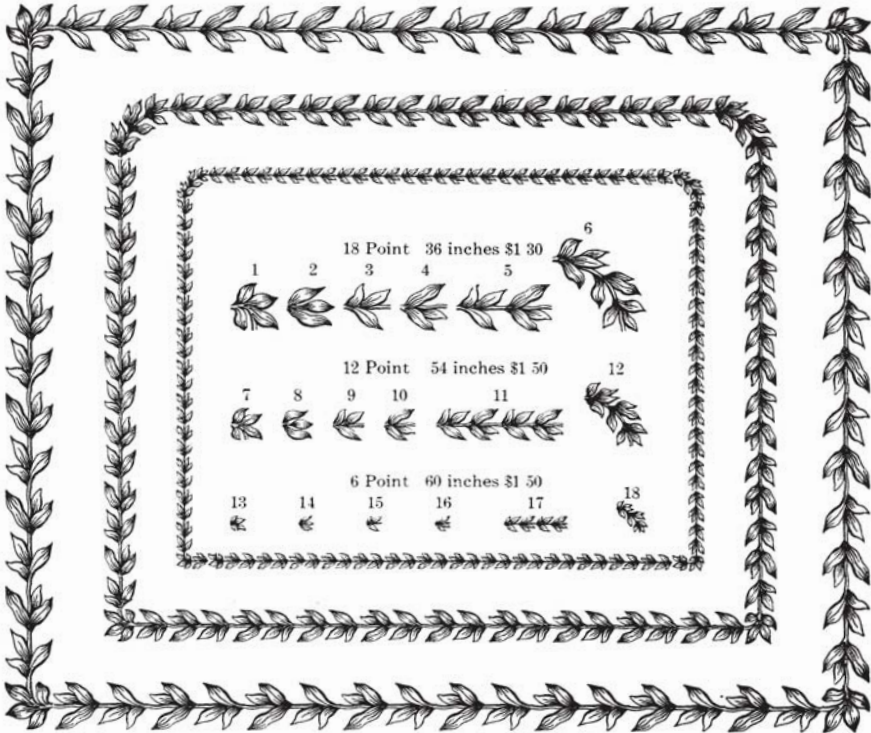


Characters of 18 Point Laurel Ornaments

The characters of 6 Point and of 12 Point are practically similar to these



Myrtle Borders



747

Primrose Borders

